



STRATHFIELD, NSW
10 Melville Avenue

5
BED

3
BATH

2
CAR

Devine

Luxurious Executive Lifestyle

This architecturally inspired 2 storey masterpiece is defined by flowing spacious, light-filled interiors and outstanding designer finishes. It's nestled in a peaceful location on 766sqm of glorious sundrenched gardens. With gorgeous features throughout, this five bedroom home is set to impress. Featuring a sundrenched family room and separate dining & living areas with polished timber floors which set an ambience of opulence and class. The kitchen is a gourmet affair featuring Miele Appliances, Caesarstone bench tops and heated floors. Also boasting a double lock up garage plus secure parking for 2 cars. Conveniently located to Strathfield Park, schools, village shops and transport. Inspect today and you could be lucky enough to be calling this your new home!

For Sale \$2,100,000

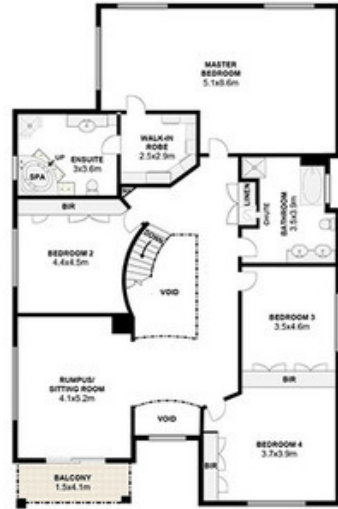
Contact: Steven Devine
02 8789 0217
0419 202 930
Type: House
Sold Date: 14/10/2013
<https://www.devinere.com.au>



SITE PLAN (not to scale)



GROUND FLOOR



FIRST FLOOR

10 Melville Avenue Strathfield

Floor plan by DG Life

The following floor plan is shown for presentation purposes only and is not part of any legal document. All measurements and figures are approximate.



Plans shown are only indicative of layout. Dimensions are approximate.

STRATHFIELD, NSW
10 Melville Avenue