



Homebush West, NSW

23/37-43 Eastbourne Road

2
BED

1
BATH

1
CAR

Devine

Finders Keepers!

Set within a well maintained security building in a central location, just a short walk to Flemington Station, Homebush West Public School and shopping village, plus easy access to cafes and Paddy's Markets.

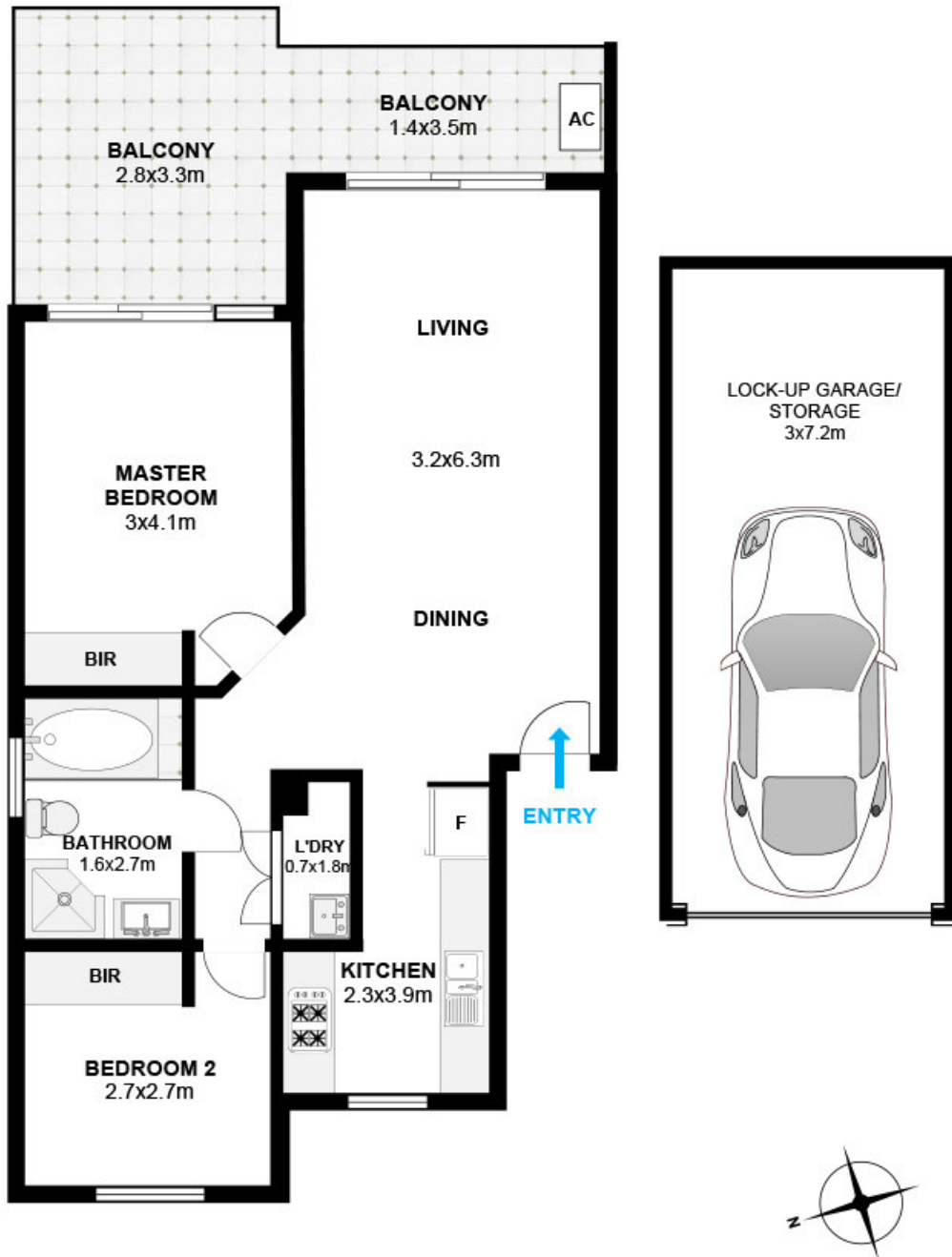
Boasting contemporary interiors with an open plan living and dining area that flows through to a deep covered balcony. Designer stone kitchen fit for any home master chef, two double bedrooms appointed with built-in wardrobes plus a modern bathroom with floor-to-ceiling tiles and a separate bath.

This luxurious home is the perfect pad for any lifestyle and also comes with an easy access large lock up garage and security intercom access. Perfect for the first home buyer or astute investor looking for great returns in a highly sought after locale. It's ready to move straight in or rent and our instructions are it must be sold!

For Sale \$600,000

Contact: Hanna Kim
02 8789 0244
0435 340 944

Type: Apartment
Sold Date: 16/06/2018
<https://www.devinere.com.au>



23/37-43 Eastbourne Rd Homebush West

Floor plan by DG Life

The following floor plan is shown for presentation purposes only and is not part of any legal document. All measurements and figures are approximate.



Plans shown are only indicative of layout. Dimensions are approximate.

HOMEBUSH WEST, NSW
23/37-43 Eastbourne Road