



STRATHFIELD, NSW

5 Morgan Place

3
BED

2
BATH

2
CAR

Devine

Affordable Family Home in Quiet Locale

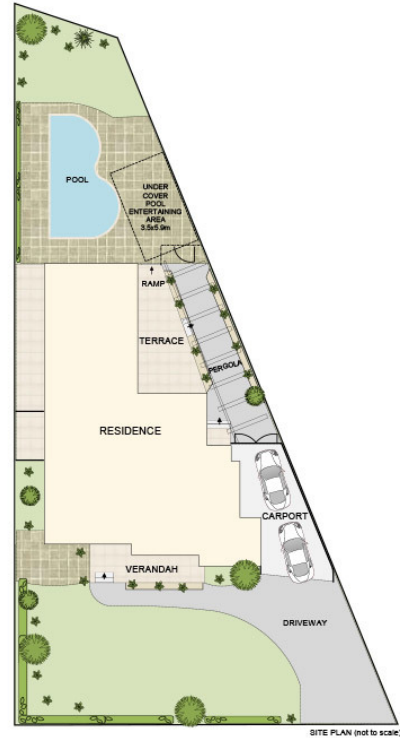
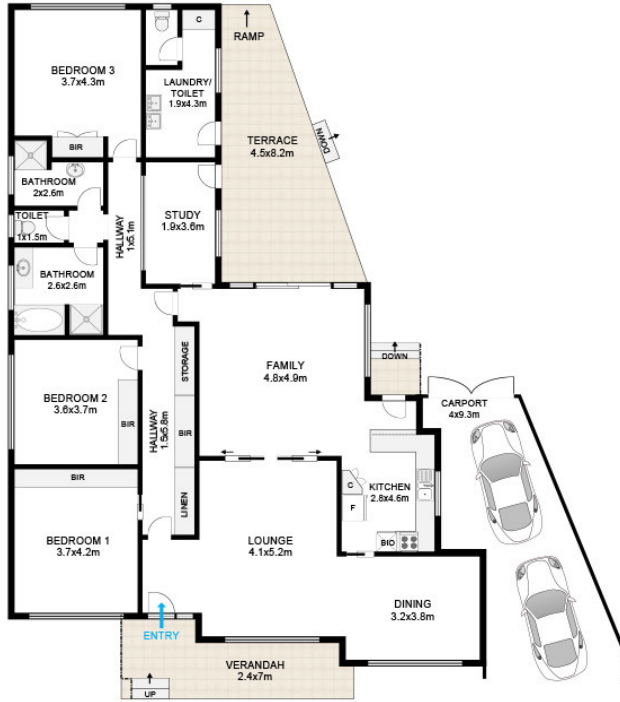
This well maintained family home has served its purpose for the current owners and is now time to move on. The first thing you'll notice is the extra wide 23.5m (approx) frontage and nicely manicured garden. Then as you enter the home, you will discover 3 good sized bedrooms plus study, a separate lounge and dining room, spacious family room, neat and tidy kitchen, 2 bathrooms and air conditioning. Retreat to the backyard and take a dip in the sparkling in ground pool or let the kids play on the lush lawn. Also with a side carport for 1-2 vehicles and within metres to shops and transport, here is your chance to enter the Strathfield house market!

Land Size: 645 sqm (approx)

For Sale \$1,495,000

Contact: Greg Emerton
02 8789 0205
0405 126 064
Steven Devine
02 8789 0217
0419 202 930

Type: House
Sold Date: 16/01/2019
<https://www.devinere.com.au>



5 Morgan Place Strathfield

Floor plan by DG Life

The following floor plan is shown for presentation purposes only and is not part of any legal document. All measurements and figures are approximate.



Plans shown are only indicative of layout. Dimensions are approximate.

STRATHFIELD, NSW
5 Morgan Place