



**Dulwich Hill, NSW**  
10/401 Marrickville Road

**2**  
BED

**1**  
BATH

**1**  
CAR

**Devine**

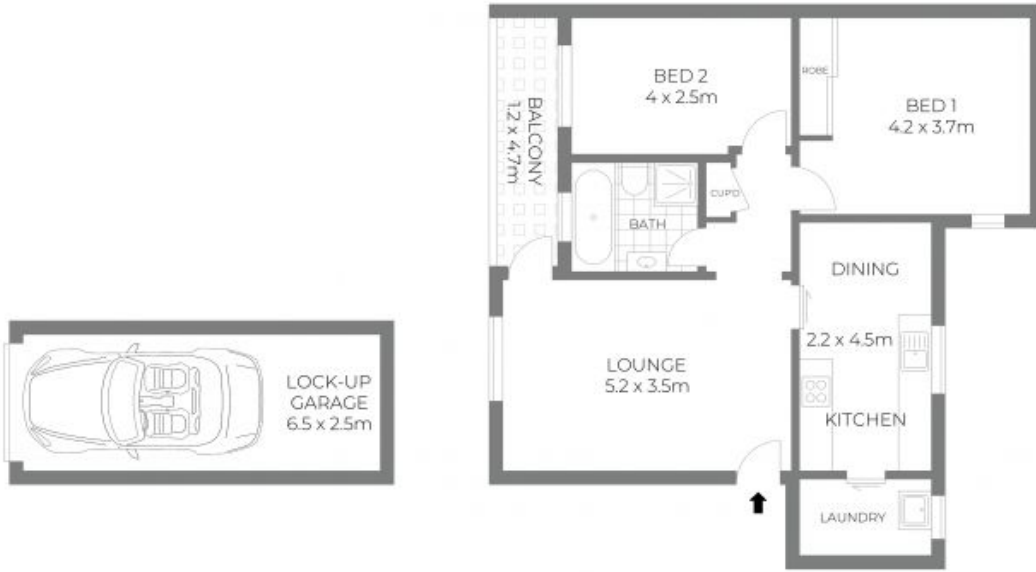
**Great Starter Offers Lifestyle of Convenience in Village Setting**

Set in the 'Belaire' complex, this classic blonde brick apartment has been beautifully updated to accommodate a lifestyle of modern convenience. It's perfectly placed within walking distance of Dulwich Hill Village's selection of shops, caf?s and restaurants, while Dulwich Grove light rail and the train station are also nearby.

- Nestled in a boutique block containing only 15 residences
- Practical layout with freshly presented interiors throughout
- Sizeable lounge opens out to an undercover alfresco balcony
- Light filled galley style kitchen adjoins the dining zone
- Two generous bedrooms include the master with a built-in

**Forthcoming Auction**

**View:** Sat, 9 Jul 2022 @12:15 pm - 12:45 pm  
**Contact:** David Diamantopoulos  
 02 9569 8000  
 0418 569 800  
 Poppy Diamantopoulos  
 02 9569 8000  
 0406 588 880  
**Type:** Apartment  
<https://www.devinere.com.au>



DISCLAIMER: All figures quoted are indicative only. Dimensions, rates and fees are approximate and subject to change. We cannot guarantee accuracy and interested persons should rely on their own enquiries.



**DULWICH HILL**  
10/401 MARRICKVILLE ROAD

**Devine**  
real estate  
[devinere.com.au](http://devinere.com.au)

Plans shown are only indicative of layout. Dimensions are approximate.

**Dulwich Hill, NSW**  
10/401 Marrickville Road